

# Hosworth Foundation U1600 Tournament

Saturday 29<sup>th</sup>, Sunday 30<sup>th</sup> of September  
& Monday 1<sup>st</sup> of October

Saturday – 9.30am, 12.30pm and 3.30pm

Sunday – 9.30am, 12.30pm and 3.30pm

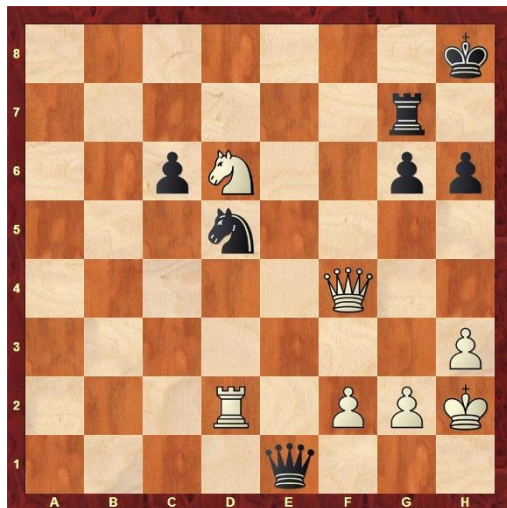
Monday – 12.30pm and 3.30pm

**Eight Rounds, Swiss Draw**

Rate of Play – Fischer Classic

60 Minutes + 10 Seconds a move

Players have the option of taking two (2) ½ point bye  
with the prior approval of the Arbiter



**1<sup>st</sup> \$200 - 2<sup>nd</sup> \$150 - 3<sup>rd</sup> \$100**

Best Rating Performance, Best Unrated, Best Junior Boy & Girl – \$80 each

Proudly sponsored by the Hosworth Foundation  
At the Chess Centre of South Australia, 10 Ranelagh Street, Adelaide

**Entry Fees – Hosworth Foundation U1600**

**Adult – \$50**

**Concession – \$40**

**Junior – \$30**

A late entry fee of \$10 will apply to all entries  
received after 5pm Friday 28<sup>th</sup> of September 2018

Players must score until less than 5 minutes remain on their clock

Final entries close 9.15am Saturday 29<sup>th</sup> of September

Forfeits must be avoided if possible. Forfeit time is 30 minutes

If you have a problem, please notify the Arbiter

*All Players must check in, in person, no later  
than 15 minutes before the first round*

Entries to SACA Tournament Secretary

[tournaments@sachess.org.au](mailto:tournaments@sachess.org.au)

CUT HERE

## Entry Form – Hosworth Foundation U1600

Full Name \_\_\_\_\_

Date of Birth \_\_\_\_\_

Telephone \_\_\_\_\_

Email Address \_\_\_\_\_

SACA may email me about local chess news [tick one] Yes  No

Fee paid [tick one] \$30  \$40  \$50  \$60

Signature \_\_\_\_\_